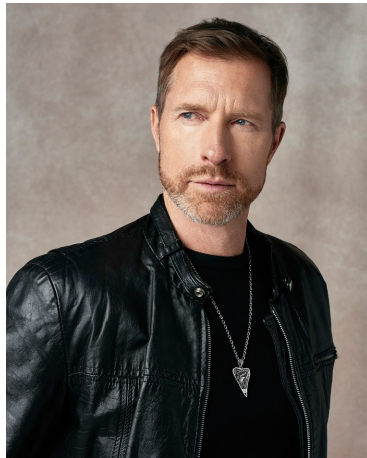


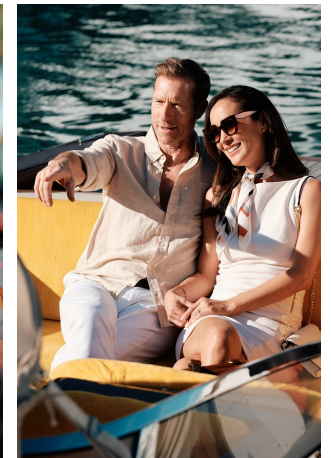
Gary Goba Height 6'1" | 185cm Suit 40" | 101cm R Shirt 35" | 89cm Waist 32" | 81cm
 Inseam 33" | 84cm Shoe 10.5 US | 44.5 EU Hair Blonde Eyes Blue



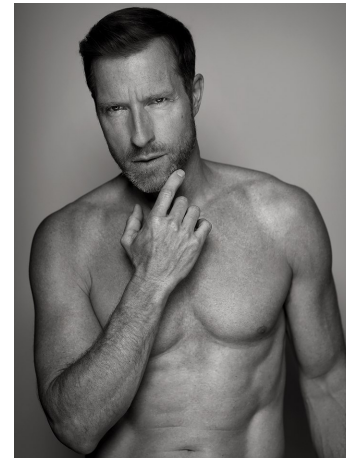
Gary Goba Height 6'1" | 185cm Suit 40" | 101cm R Shirt 35" | 89cm Waist 32" | 81cm
Inseam 33" | 84cm Shoe 10.5 US | 44.5 EU Hair Blonde Eyes Blue



Gary Goba Height 6'1" | 185cm Suit 40" | 101cm R Shirt 35" | 89cm Waist 32" | 81cm
 Inseam 33" | 84cm Shoe 10.5 US | 44.5 EU Hair Blonde Eyes Blue



Gary Goba Height 6'1" | 185cm Suit 40" | 101cm R Shirt 35" | 89cm Waist 32" | 81cm
Inseam 33" | 84cm Shoe 10.5 US | 44.5 EU Hair Blonde Eyes Blue



Gary Goba Height 6'1" | 185cm Suit 40" | 101cm R Shirt 35" | 89cm Waist 32" | 81cm
Inseam 33" | 84cm Shoe 10.5 US | 44.5 EU Hair Blonde Eyes Blue

CGM
CAROLINE GLEASON
MANAGEMENT



LEFT
CANALI BLUE WOOL
 SILK FOXEAD, \$2,095
 DRESS SHIRT, \$275
 BOWTIE, \$200

RIGHT
RALPH LAUREN
 PURPLE LABEL VELVET
 JACKET, \$3,095
 DRESS SHIRT, \$545
 BLACK DRESS
 PANT, \$695

Gary Goba Height 6'1" | 185cm Suit 40" | 101cm R Shirt 35" | 89cm Waist 32" | 81cm
 Inseam 33" | 84cm Shoe 10.5 US | 44.5 EU Hair Blonde Eyes Blue



Gary Goba Height 6'1" | 185cm Suit 40" | 101cm R Shirt 35" | 89cm Waist 32" | 81cm
 Inseam 33" | 84cm Shoe 10.5 US | 44.5 EU Hair Blonde Eyes Blue