



Gary Goba Height 6'1" | 185cm Suit 40" | 101cm R Shirt 35" | 89cm Waist 32" | 81cm
Inseam 33" | 84cm Shoe 10.5 US | 44.5 EU Hair Blonde Eyes Blue



Gary Goba Height 6'1" | 185cm Suit 40" | 101cm R Shirt 35" | 89cm Waist 32" | 81cm
Inseam 33" | 84cm Shoe 10.5 US | 44.5 EU Hair Blonde Eyes Blue



WINDSOR
Cotton Linen Sport Jacket \$1,495
Cotton Cashmere Polo \$450
Linen Dress Pants \$595
MONTBLANC
Calfskin Leather Briefcase \$1,640

Office Energy

We're not "returning" to the office; we're already back and the latest dress codes are already taking shape. Business classics remain, but now new pieces are helping us blend comfort, versatility, and a touch of personal flair.

Photographer KYLE WILSON, assisted by EVAN KOLAR Styling CHUNYU YUAN & KARYSSA PAEZ
Grooming SOPHIE HSIN (PLUTINO) Models GARY (ELITE), AIME (CIOTTI) Location PINTEREST TORONTO

Gary Goba Height 6'1" | 185cm Suit 40" | 101cm R Shirt 35" | 89cm Waist 32" | 81cm
Inseam 33" | 84cm Shoe 10.5 US | 44.5 EU Hair Blonde Eyes Blue

CGM
CAROLINE GLEASON
MANAGEMENT



Gary Goba Height 6'1" | 185cm Suit 40" | 101cm R Shirt 35" | 89cm Waist 32" | 81cm
Inseam 33" | 84cm Shoe 10.5 US | 44.5 EU Hair Blonde Eyes Blue

CGM
CAROLINE GLEASON
MANAGEMENT



Gary Goba Height 6'1" | 185cm Suit 40" | 101cm R Shirt 35" | 89cm Waist 32" | 81cm
Inseam 33" | 84cm Shoe 10.5 US | 44.5 EU Hair Blonde Eyes Blue

CGM
CAROLINE GLEASON
MANAGEMENT

UNBOUND
MERINO



Gary Goba Height 6'1" | 185cm Suit 40" | 101cm R Shirt 35" | 89cm Waist 32" | 81cm
Inseam 33" | 84cm Shoe 10.5 US | 44.5 EU Hair Blonde Eyes Blue

CGM
CAROLINE GLEASON
MANAGEMENT

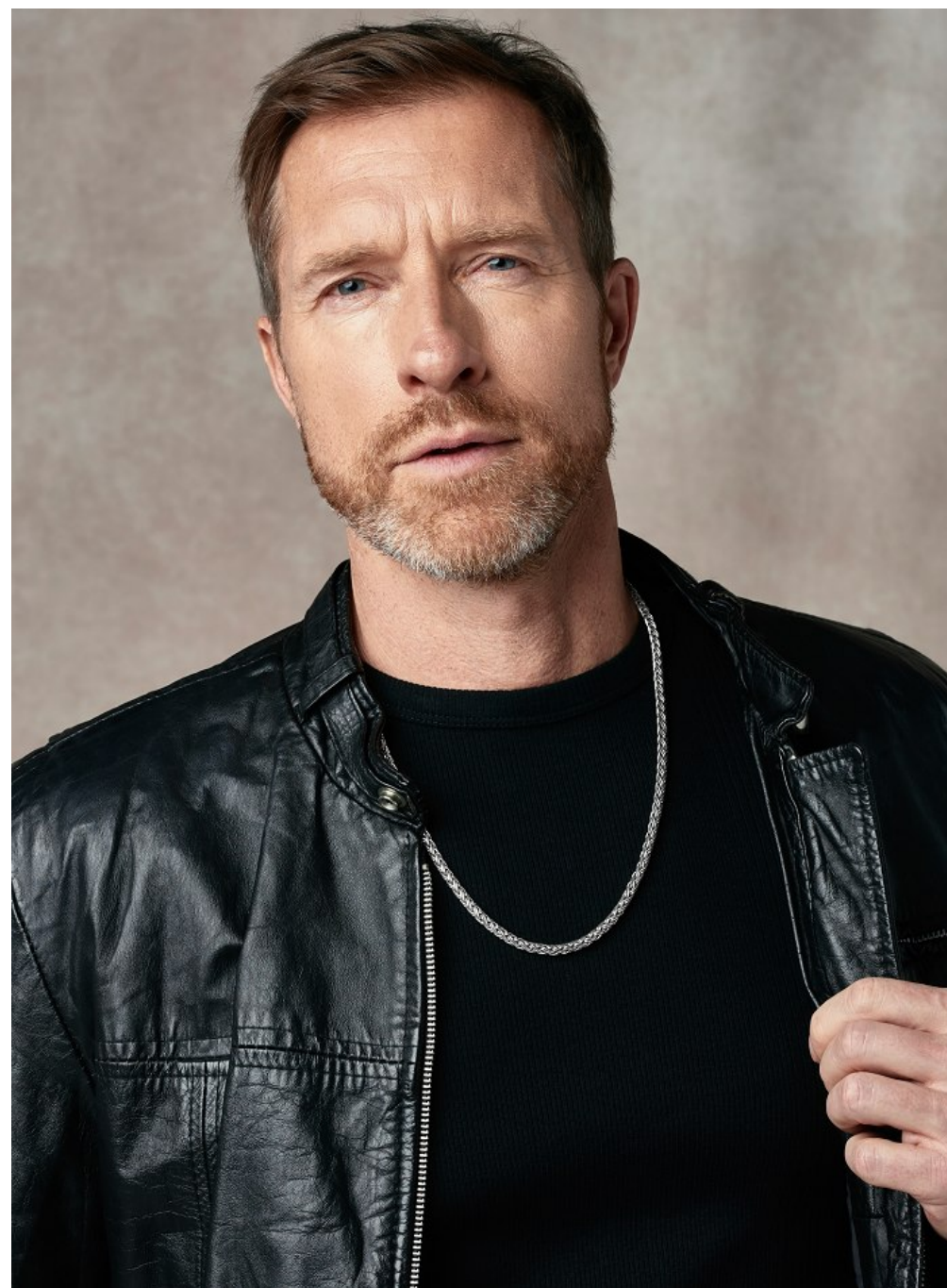
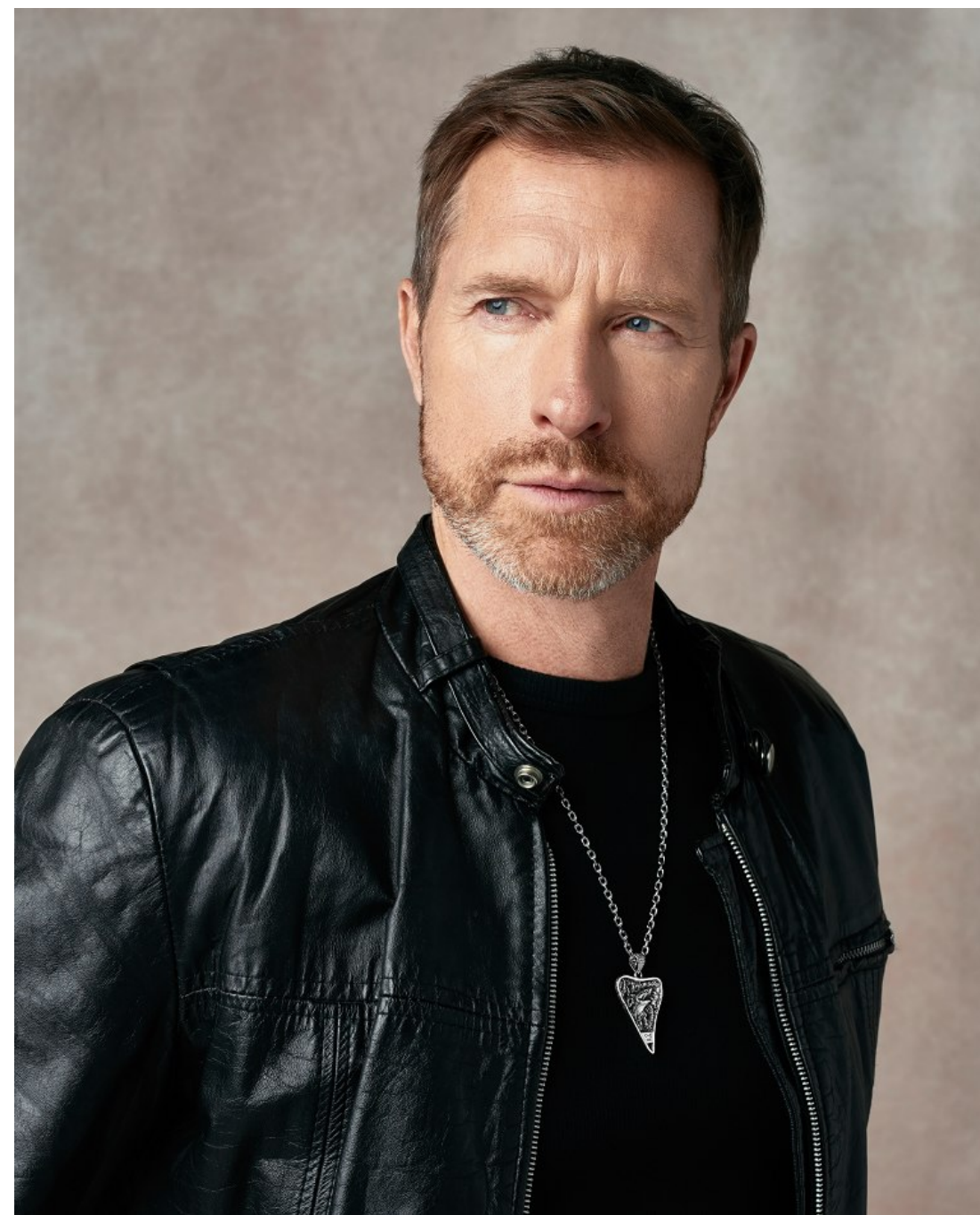


L.B.M
Cotton Sport Jacket \$1,095
CANALI
Cotton Sweater \$275
Linen Pocket Square \$105
BRAX
Cotton Blend Pants \$288
HAROLD
Calfskin Suede Loafers \$550

Gary Goba Height 6'1" | 185cm Suit 40" | 101cm R Shirt 35" | 89cm Waist 32" | 81cm
Inseam 33" | 84cm Shoe 10.5 US | 44.5 EU Hair Blonde Eyes Blue



Gary Goba Height 6'1" | 185cm Suit 40" | 101cm R Shirt 35" | 89cm Waist 32" | 81cm
Inseam 33" | 84cm Shoe 10.5 US | 44.5 EU Hair Blonde Eyes Blue



Gary Goba Height 6'1" | 185cm Suit 40" | 101cm R Shirt 35" | 89cm Waist 32" | 81cm
Inseam 33" | 84cm Shoe 10.5 US | 44.5 EU Hair Blonde Eyes Blue



Gary Goba Height 6'1" | 185cm Suit 40" | 101cm R Shirt 35" | 89cm Waist 32" | 81cm
Inseam 33" | 84cm Shoe 10.5 US | 44.5 EU Hair Blonde Eyes Blue



Gary Goba Height 6'1" | 185cm Suit 40" | 101cm R Shirt 35" | 89cm Waist 32" | 81cm
Inseam 33" | 84cm Shoe 10.5 US | 44.5 EU Hair Blonde Eyes Blue

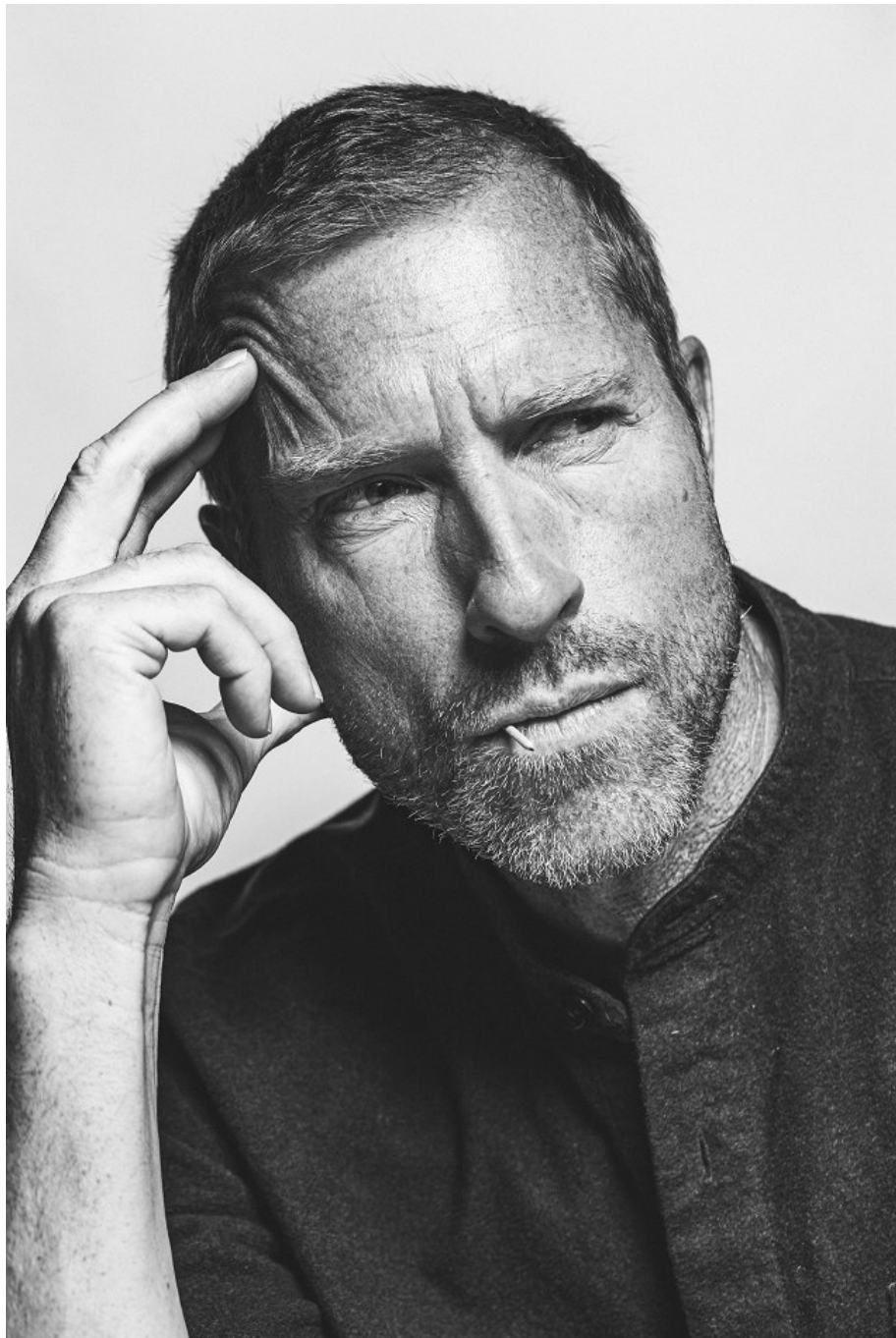


LEFT AND RIGHT: sweater by Scotch & Soda; pants by Hugo Boss; blazer by Christopher Bates; watch by Daniel Wellington; shoes by Common Project

PREFERREDMAGAZINE.CA 47

Gary Goba Height 6'1" | 185cm Suit 40" | 101cm R Shirt 35" | 89cm Waist 32" | 81cm
Inseam 33" | 84cm Shoe 10.5 US | 44.5 EU Hair Blonde Eyes Blue

CGM
CAROLINE GLEASON
MANAGEMENT



Gary Goba Height 6'1" | 185cm Suit 40" | 101cm R Shirt 35" | 89cm Waist 32" | 81cm
Inseam 33" | 84cm Shoe 10.5 US | 44.5 EU Hair Blonde Eyes Blue



Gary Goba Height 6'1" | 185cm Suit 40" | 101cm R Shirt 35" | 89cm Waist 32" | 81cm
Inseam 33" | 84cm Shoe 10.5 US | 44.5 EU Hair Blonde Eyes Blue



Gary Goba Height 6'1" | 185cm Suit 40" | 101cm R Shirt 35" | 89cm Waist 32" | 81cm
Inseam 33" | 84cm Shoe 10.5 US | 44.5 EU Hair Blonde Eyes Blue

CGM
CAROLINE GLEASON
MANAGEMENT



Gary Goba Height 6'1" | 185cm Suit 40" | 101cm R Shirt 35" | 89cm Waist 32" | 81cm
Inseam 33" | 84cm Shoe 10.5 US | 44.5 EU Hair Blonde Eyes Blue



Gary Goba Height 6'1" | 185cm Suit 40" | 101cm R Shirt 35" | 89cm Waist 32" | 81cm
Inseam 33" | 84cm Shoe 10.5 US | 44.5 EU Hair Blonde Eyes Blue



Gary Goba Height 6'1" | 185cm Suit 40" | 101cm R Shirt 35" | 89cm Waist 32" | 81cm
Inseam 33" | 84cm Shoe 10.5 US | 44.5 EU Hair Blonde Eyes Blue



Gary Goba Height 6'1" | 185cm Suit 40" | 101cm R Shirt 35" | 89cm Waist 32" | 81cm
Inseam 33" | 84cm Shoe 10.5 US | 44.5 EU Hair Blonde Eyes Blue

CGM
CAROLINE GLEASON
MANAGEMENT



Gary Goba Height 6'1" | 185cm Suit 40" | 101cm R Shirt 35" | 89cm Waist 32" | 81cm
Inseam 33" | 84cm Shoe 10.5 US | 44.5 EU Hair Blonde Eyes Blue



Gary Goba Height 6'1" | 185cm Suit 40" | 101cm R Shirt 35" | 89cm Waist 32" | 81cm
Inseam 33" | 84cm Shoe 10.5 US | 44.5 EU Hair Blonde Eyes Blue

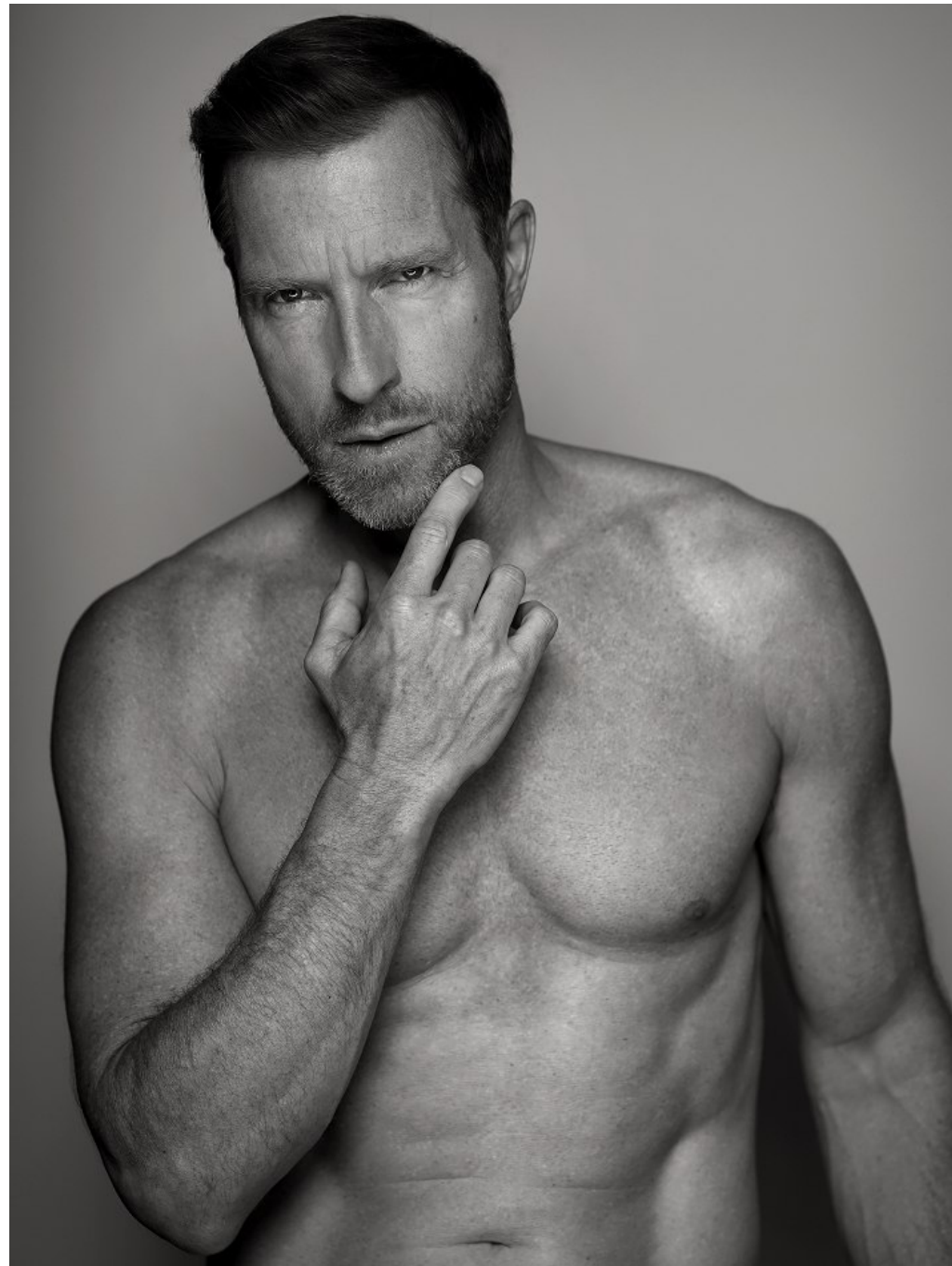
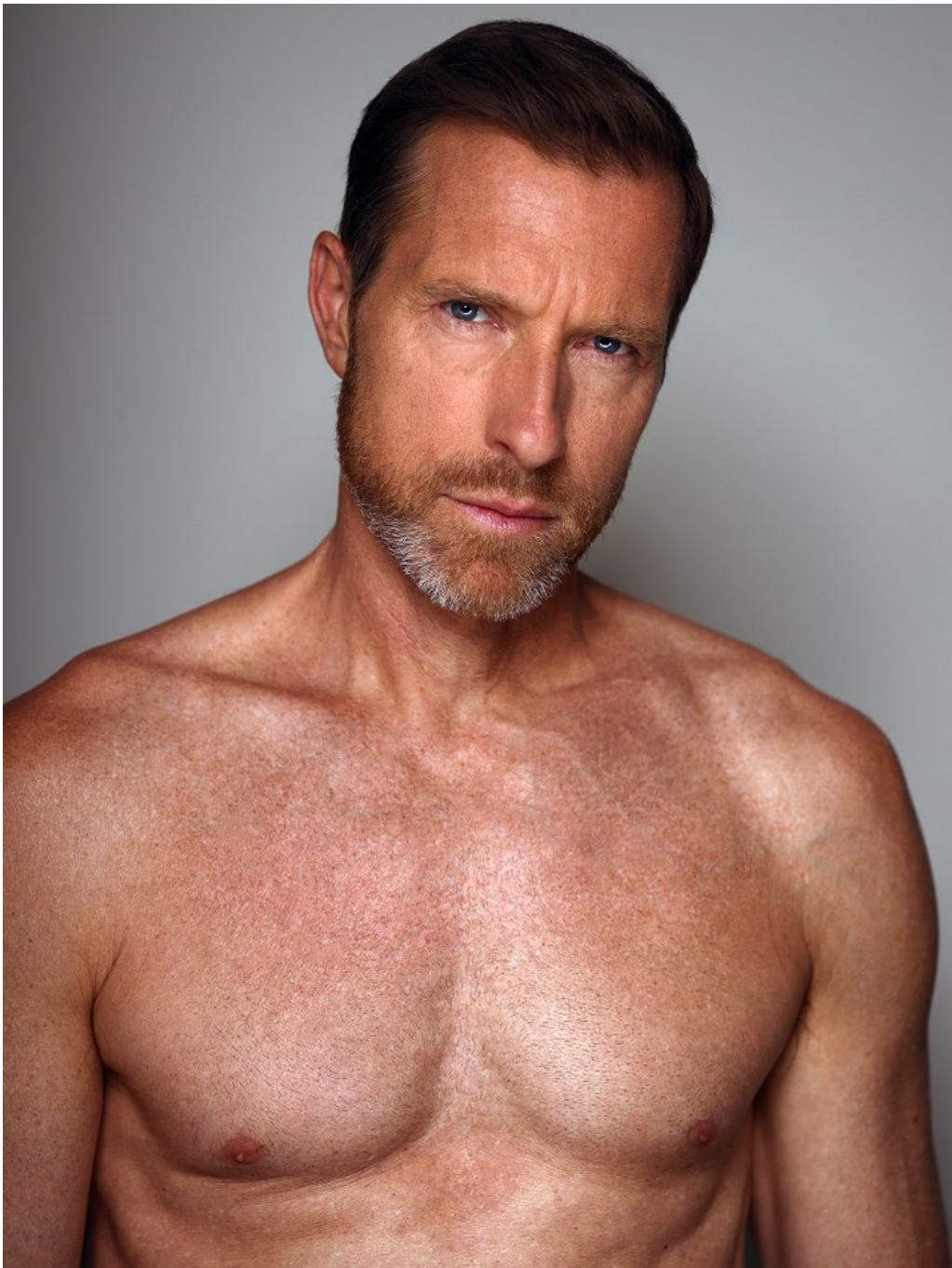


Gary Goba Height 6'1" | 185cm Suit 40" | 101cm R Shirt 35" | 89cm Waist 32" | 81cm
Inseam 33" | 84cm Shoe 10.5 US | 44.5 EU Hair Blonde Eyes Blue

CGM
CAROLINE GLEASON
MANAGEMENT



Gary Goba Height 6'1" | 185cm Suit 40" | 101cm R Shirt 35" | 89cm Waist 32" | 81cm
Inseam 33" | 84cm Shoe 10.5 US | 44.5 EU Hair Blonde Eyes Blue



Gary Goba Height 6'1" | 185cm Suit 40" | 101cm R Shirt 35" | 89cm Waist 32" | 81cm
Inseam 33" | 84cm Shoe 10.5 US | 44.5 EU Hair Blonde Eyes Blue



Gary Goba Height 6'1" | 185cm Suit 40" | 101cm R Shirt 35" | 89cm Waist 32" | 81cm
Inseam 33" | 84cm Shoe 10.5 US | 44.5 EU Hair Blonde Eyes Blue



Gary Goba Height 6'1" | 185cm Suit 40" | 101cm R Shirt 35" | 89cm Waist 32" | 81cm
Inseam 33" | 84cm Shoe 10.5 US | 44.5 EU Hair Blonde Eyes Blue



Gary Goba Height 6'1" | 185cm Suit 40" | 101cm R Shirt 35" | 89cm Waist 32" | 81cm
Inseam 33" | 84cm Shoe 10.5 US | 44.5 EU Hair Blonde Eyes Blue



Gary Goba Height 6'1" | 185cm Suit 40" | 101cm R Shirt 35" | 89cm Waist 32" | 81cm
Inseam 33" | 84cm Shoe 10.5 US | 44.5 EU Hair Blonde Eyes Blue



Gary Goba Height 6'1" | 185cm Suit 40" | 101cm R Shirt 35" | 89cm Waist 32" | 81cm
Inseam 33" | 84cm Shoe 10.5 US | 44.5 EU Hair Blonde Eyes Blue



Gary Goba Height 6'1" | 185cm Suit 40" | 101cm R Shirt 35" | 89cm Waist 32" | 81cm
Inseam 33" | 84cm Shoe 10.5 US | 44.5 EU Hair Blonde Eyes Blue



LEFT

HAROLD COCKTAIL JACKET,
\$895; BLACK DRESS
SHIRT, \$195; BLACK
DRESS PANTS, \$225.

RIGHT

ETRO BLACK METALLIC
COCKTAIL JACKET,
\$1,845; TEE, \$645;
BLACK METALLIC DRESS
PANTS, \$845.



Gary Goba Height 6'1" | 185cm Suit 40" | 101cm R Shirt 35" | 89cm Waist 32" | 81cm
Inseam 33" | 84cm Shoe 10.5 US | 44.5 EU Hair Blonde Eyes Blue



Gary Goba Height 6'1" | 185cm Suit 40" | 101cm R Shirt 35" | 89cm Waist 32" | 81cm
Inseam 33" | 84cm Shoe 10.5 US | 44.5 EU Hair Blonde Eyes Blue

CGM
CAROLINE GLEASON
MANAGEMENT



MONCLER CAMEL DOWN
PARKA, \$2,460; PANTS,
\$725; TURTLENECK,
\$870; GLOVES, \$305.

22 Harry Rosen FW21



MOORER VEST, \$1,245;
MAURIZIO BALDASSARI
MOCKNECK SWEATER, \$1,195;
JOOP! DARK BLUE WASH
JEANS, \$278; **HESTRA BLACK**
LEATHER GLOVES, \$195.

Harry Rosen FW21 15

Gary Goba Height 6'1" | 185cm Suit 40" | 101cm R Shirt 35" | 89cm Waist 32" | 81cm
Inseam 33" | 84cm Shoe 10.5 US | 44.5 EU Hair Blonde Eyes Blue

CGM
CAROLINE GLEASON
MANAGEMENT



Gary Goba Height 6'1" | 185cm Suit 40" | 101cm R Shirt 35" | 89cm Waist 32" | 81cm
Inseam 33" | 84cm Shoe 10.5 US | 44.5 EU Hair Blonde Eyes Blue

CGM
CAROLINE GLEASON
MANAGEMENT



Gary Goba Height 6'1" | 185cm Suit 40" | 101cm R Shirt 35" | 89cm Waist 32" | 81cm
Inseam 33" | 84cm Shoe 10.5 US | 44.5 EU Hair Blonde Eyes Blue