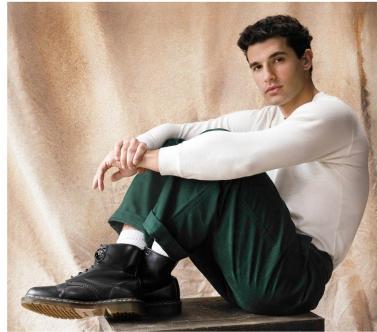


Chris O'brien Height 6'0" | 183cm Suit 38" | 96cm R Shirt 33" | 84cm Waist 31" | 79cm
Inseam 32" | 81cm Shoe 11.5 US | 46 EU Hair Brown Eyes Brown

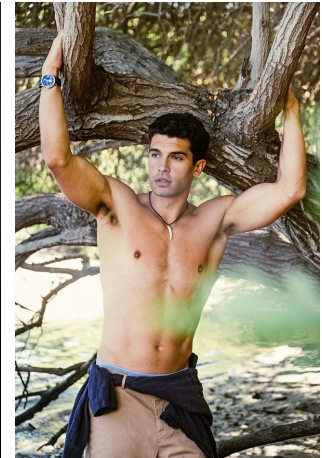


Chris O'brien Height 6'0" | 183cm Suit 38" | 96cm R Shirt 33" | 84cm Waist 31" | 79cm
 Inseam 32" | 81cm Shoe 11.5 US | 46 EU Hair Brown Eyes Brown



Chris O'brien Height 6'0" | 183cm Suit 38" | 96cm R Shirt 33" | 84cm Waist 31" | 79cm
Inseam 32" | 81cm Shoe 11.5 US | 46 EU Hair Brown Eyes Brown

CGM
CAROLINE GLEASON
MANAGEMENT



Chris O'brien Height 6'0" | 183cm Suit 38" | 96cm R Shirt 33" | 84cm Waist 31" | 79cm
Inseam 32" | 81cm Shoe 11.5 US | 46 EU Hair Brown Eyes Brown



Chris O'brien Height 6'0" | 183cm Suit 38" | 96cm R Shirt 33" | 84cm Waist 31" | 79cm
Inseam 32" | 81cm Shoe 11.5 US | 46 EU Hair Brown Eyes Brown



Chris O'brien Height 6'0" | 183cm Suit 38" | 96cm R Shirt 33" | 84cm Waist 31" | 79cm
Inseam 32" | 81cm Shoe 11.5 US | 46 EU Hair Brown Eyes Brown