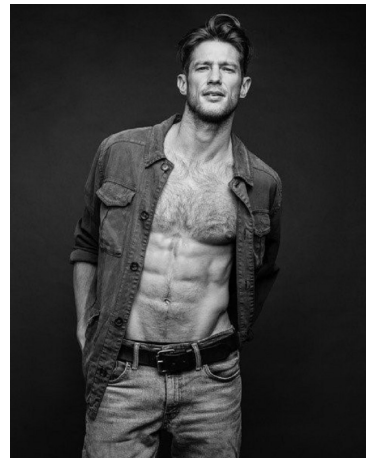
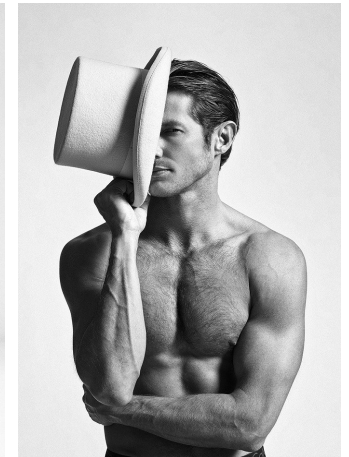


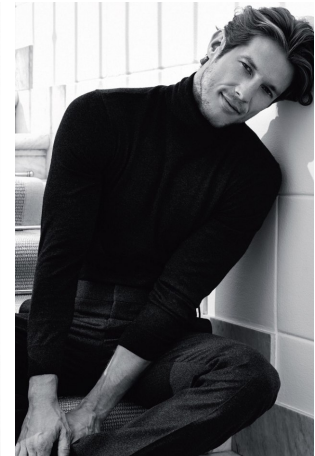
Domenique Melchior Height 6'1" | 185cm Suit 40" | 101cm R Shirt 33" | 84cm Waist 32" | 81cm
 Inseam 33" | 84cm Shoe 10.5 US | 44.5 EU Hair Brown Eyes Blue



Domenique Melchior Height 6'1" | 185cm Suit 40" | 101cm R Shirt 33" | 84cm Waist 32" | 81cm
 Inseam 33" | 84cm Shoe 10.5 US | 44.5 EU Hair Brown Eyes Blue



Domenique Melchior Height 6'1" | 185cm Suit 40" | 101cm R Shirt 33" | 84cm Waist 32" | 81cm
Inseam 33" | 84cm Shoe 10.5 US | 44.5 EU Hair Brown Eyes Blue



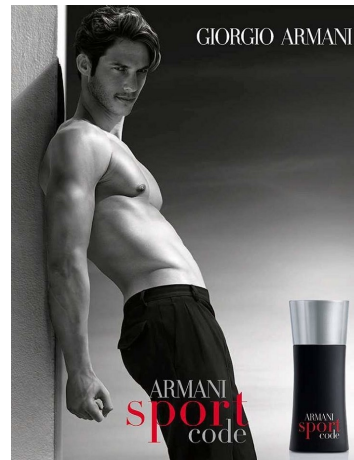
Domenique Melchior Height 6'1" | 185cm Suit 40" | 101cm R Shirt 33" | 84cm Waist 32" | 81cm
 Inseam 33" | 84cm Shoe 10.5 US | 44.5 EU Hair Brown Eyes Blue



High Contrast 2015 Autumn/Winter 2015 Look 1 High Contrast 2015 Autumn/Winter 2015 Look 2 High Contrast 2015 Autumn/Winter 2015 Look 3 High Contrast 2015 Autumn/Winter 2015 Look 4



Domenique Melchior Height 6'1" | 185cm Suit 40" | 101cm R Shirt 33" | 84cm Waist 32" | 81cm
Inseam 33" | 84cm Shoe 10.5 US | 44.5 EU Hair Brown Eyes Blue



Domenique Melchior Height 6'1" | 185cm Suit 40" | 101cm R Shirt 33" | 84cm Waist 32" | 81cm
Inseam 33" | 84cm Shoe 10.5 US | 44.5 EU Hair Brown Eyes Blue