



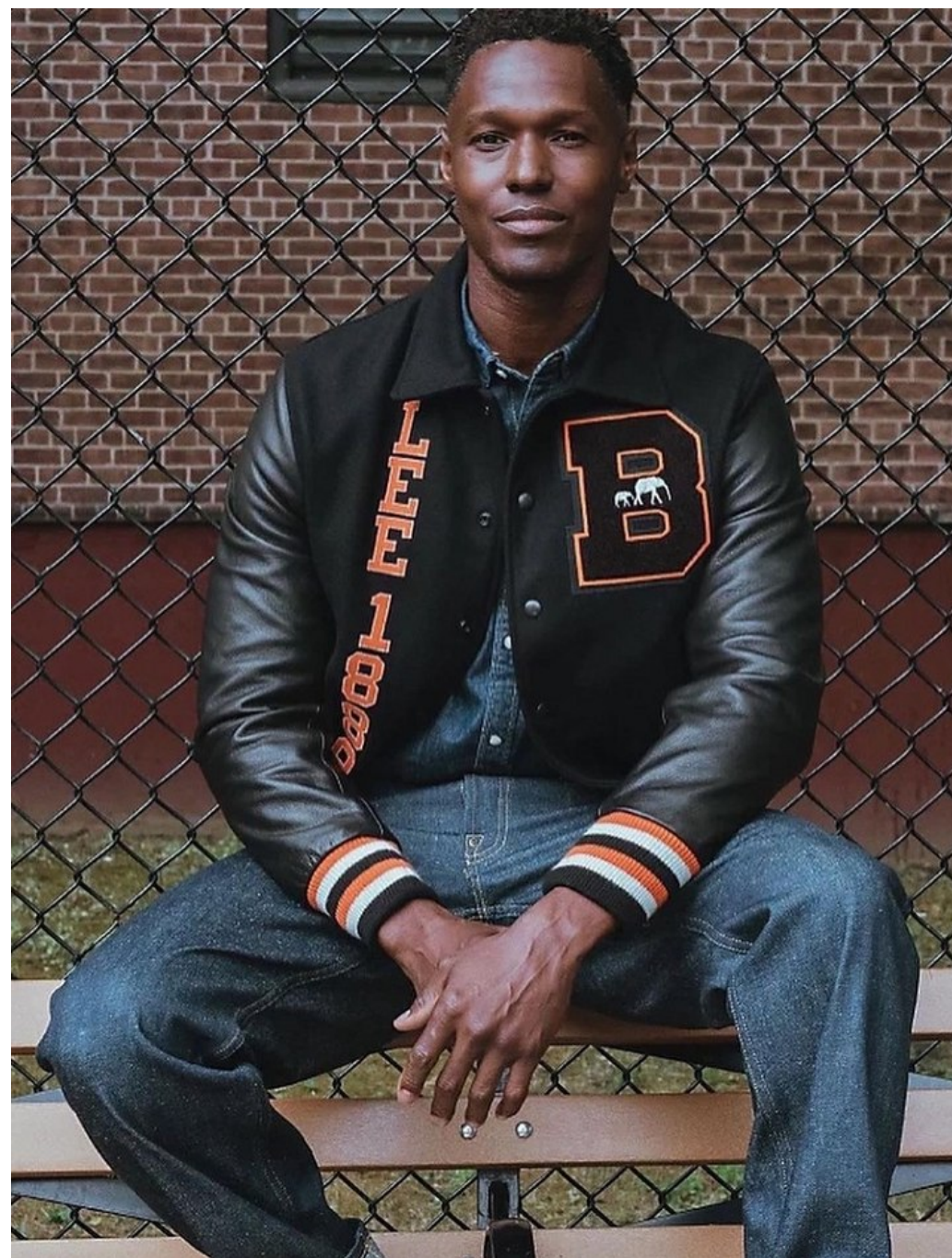
Gary Lawson Height 6'1" | 185cm Chest 34" | 86cm Suit 41" | 104cm L Shirt 34" | 86cm Waist 32" |  
81cm  
Inseam 32" | 81cm Shoe 10.5 US | 44.5 EU Hair Black Eyes Brown





Gary Lawson Height 6'1" | 185cm Chest 34" | 86cm Suit 41" | 104cm L Shirt 34" | 86cm Waist 32" | 81cm  
Inseam 32" | 81cm Shoe 10.5 US | 44.5 EU Hair Black Eyes Brown





Gary Lawson   Height 6'1" | 185cm   Chest 34" | 86cm   Suit 41" | 104cm L   Shirt 34" | 86cm   Waist 32" | 81cm  
Inseam 32" | 81cm   Shoe 10.5 US | 44.5 EU   Hair Black   Eyes Brown

**CGM**  
CAROLINE GLEASON  
MANAGEMENT





Gary Lawson    Height 6'1" | 185cm    Chest 34" | 86cm    Suit 41" | 104cm L    Shirt 34" | 86cm    Waist 32" | 81cm  
Inseam 32" | 81cm    Shoe 10.5 US | 44.5 EU    Hair Black    Eyes Brown

**CGM**  
CAROLINE GLEASON  
MANAGEMENT





Gary Lawson    Height 6'1" | 185cm    Chest 34" | 86cm    Suit 41" | 104cm L    Shirt 34" | 86cm    Waist 32" | 81cm  
Inseam 32" | 81cm    Shoe 10.5 US | 44.5 EU    Hair Black    Eyes Brown

**CGM**  
CAROLINE GLEASON  
MANAGEMENT





## OUTERWEAR

---

Gary Lawson   Height 6'1" | 185cm   Chest 34" | 86cm   Suit 41" | 104cm L   Shirt 34" | 86cm   Waist 32" | 81cm  
Inseam 32" | 81cm   Shoe 10.5 US | 44.5 EU   Hair Black   Eyes Brown





Gary Lawson Height 6'1" | 185cm Chest 34" | 86cm Suit 41" | 104cm L Shirt 34" | 86cm Waist 32" | 81cm  
Inseam 32" | 81cm Shoe 10.5 US | 44.5 EU Hair Black Eyes Brown





Gary Lawson   Height 6'1" | 185cm   Chest 34" | 86cm   Suit 41" | 104cm L   Shirt 34" | 86cm   Waist 32" | 81cm  
Inseam 32" | 81cm   Shoe 10.5 US | 44.5 EU   Hair Black   Eyes Brown

**CGM**  
CAROLINE GLEASON  
MANAGEMENT





Gary Lawson Height 6'1" | 185cm Chest 34" | 86cm Suit 41" | 104cm L Shirt 34" | 86cm Waist 32" | 81cm  
Inseam 32" | 81cm Shoe 10.5 US | 44.5 EU Hair Black Eyes Brown



# ABOVE & BEYOND

Photographer Eric Michael Roy @ericmichaelroy  
Models Gary Lawson @christopher\_gary\_lawson and Kamerra Simpson @facesofkamerra with L.A. Models @lamodels and Joe Bruzas @joelbruzas with Two Model Management @twomodelmanagement  
Hair & Makeup Artist Nicole Chew @chewchewtrain with Art Department LA @artdeptagencyla  
Hair & Makeup Artist Assistant Jen Winning @jen.winning  
Videographer Philip Alexander @philpeaixndr  
Production Assistant Andrew Park @g1park\_photos  
Executive Assistant Kelly Arnold @kellytorriaa  
Assistant Jason Wilhelm @jasonwilhelm

Paul Smith  
Suits & Shirts  
paulsmith.co.uk

Johnston and Murphy  
Shoes  
johnstonmurphy.com

68 | LEFAIR MAGAZINE

LEFAIR MAGAZINE | 69

Gary Lawson Height 6'1" | 185cm Chest 34" | 86cm Suit 41" | 104cm L Shirt 34" | 86cm Waist 32" | 81cm  
Inseam 32" | 81cm Shoe 10.5 US | 44.5 EU Hair Black Eyes Brown

**CGM**  
CAROLINE GLEASON  
MANAGEMENT



Givenchy  
Suit & Shirt  
givenchy.com

Versace  
Shoes  
versace.com



70 | LEFAIR MAGAZINE

DSquared  
Suit  
dsquared2.com

Givenchy  
Shirt  
givenchy.com

Dolce & Gabbana  
Shoes  
dolcegabbana.com

Calvin Klein  
Sunglasses  
calvinklein.com

M. Cohen Designs  
Bracelet  
mcohendesigns.com



LEFAIR MAGAZINE | 75

Gary Lawson Height 6'1" | 185cm Chest 34" | 86cm Suit 41" | 104cm L Shirt 34" | 86cm Waist 32" | 81cm  
Inseam 32" | 81cm Shoe 10.5 US | 44.5 EU Hair Black Eyes Brown

**CGM**  
CAROLINE GLEASON  
MANAGEMENT





Gary Lawson    Height 6'1" | 185cm    Chest 34" | 86cm    Suit 41" | 104cm L    Shirt 34" | 86cm    Waist 32" | 81cm  
Inseam 32" | 81cm    Shoe 10.5 US | 44.5 EU    Hair Black    Eyes Brown

**CGM**  
CAROLINE GLEASON  
MANAGEMENT





Gary Lawson Height 6'1" | 185cm Chest 34" | 86cm Suit 41" | 104cm L Shirt 34" | 86cm Waist 32" | 81cm  
Inseam 32" | 81cm Shoe 10.5 US | 44.5 EU Hair Black Eyes Brown





Gary Lawson    Height 6'1" | 185cm    Chest 34" | 86cm    Suit 41" | 104cm L    Shirt 34" | 86cm    Waist 32" | 81cm  
Inseam 32" | 81cm    Shoe 10.5 US | 44.5 EU    Hair Black    Eyes Brown





Gary Lawson   Height 6'1" | 185cm   Chest 34" | 86cm   Suit 41" | 104cm L   Shirt 34" | 86cm   Waist 32" | 81cm  
Inseam 32" | 81cm   Shoe 10.5 US | 44.5 EU   Hair Black   Eyes Brown

**CGM**  
CAROLINE GLEASON  
MANAGEMENT





Gary Lawson    Height 6'1" | 185cm    Chest 34" | 86cm    Suit 41" | 104cm L    Shirt 34" | 86cm    Waist 32" | 81cm  
Inseam 32" | 81cm    Shoe 10.5 US | 44.5 EU    Hair Black    Eyes Brown





Gary Lawson    Height 6'1" | 185cm    Chest 34" | 86cm    Suit 41" | 104cm L    Shirt 34" | 86cm    Waist 32" | 81cm  
Inseam 32" | 81cm    Shoe 10.5 US | 44.5 EU    Hair Black    Eyes Brown





Gary Lawson    Height 6'1" | 185cm    Chest 34" | 86cm    Suit 41" | 104cm L    Shirt 34" | 86cm    Waist 32" | 81cm  
Inseam 32" | 81cm    Shoe 10.5 US | 44.5 EU    Hair Black    Eyes Brown





Gary Lawson Height 6'1" | 185cm Chest 34" | 86cm Suit 41" | 104cm L Shirt 34" | 86cm Waist 32" | 81cm  
Inseam 32" | 81cm Shoe 10.5 US | 44.5 EU Hair Black Eyes Brown





Velvet Tuxedo Jacket: Strong Suit  
Crystal Mesh Tee: Panda  
Shades: LA Eyeworks



Unisex Leopard Pants: Norma Kamali  
Hoop and Stick Lariat: Stonbyton  
Bracelet: John Hardy  
Tank Top: Toni  
Boots: Toeman

Gary Lawson    Height 6'1" | 185cm    Chest 34" | 86cm    Suit 41" | 104cm L    Shirt 34" | 86cm    Waist 32" | 81cm  
Inseam 32" | 81cm    Shoe 10.5 US | 44.5 EU    Hair Black    Eyes Brown





Gary Lawson   Height 6'1" | 185cm   Chest 34" | 86cm   Suit 41" | 104cm L   Shirt 34" | 86cm   Waist 32" | 81cm  
Inseam 32" | 81cm   Shoe 10.5 US | 44.5 EU   Hair Black   Eyes Brown

**CGM**  
CAROLINE GLEASON  
MANAGEMENT





Gary Lawson    Height 6'1" | 185cm    Chest 34" | 86cm    Suit 41" | 104cm L    Shirt 34" | 86cm    Waist 32" | 81cm  
Inseam 32" | 81cm    Shoe 10.5 US | 44.5 EU    Hair Black    Eyes Brown





Gary Lawson   Height 6'1" | 185cm   Chest 34" | 86cm   Suit 41" | 104cm L   Shirt 34" | 86cm   Waist 32" | 81cm  
Inseam 32" | 81cm   Shoe 10.5 US | 44.5 EU   Hair Black   Eyes Brown