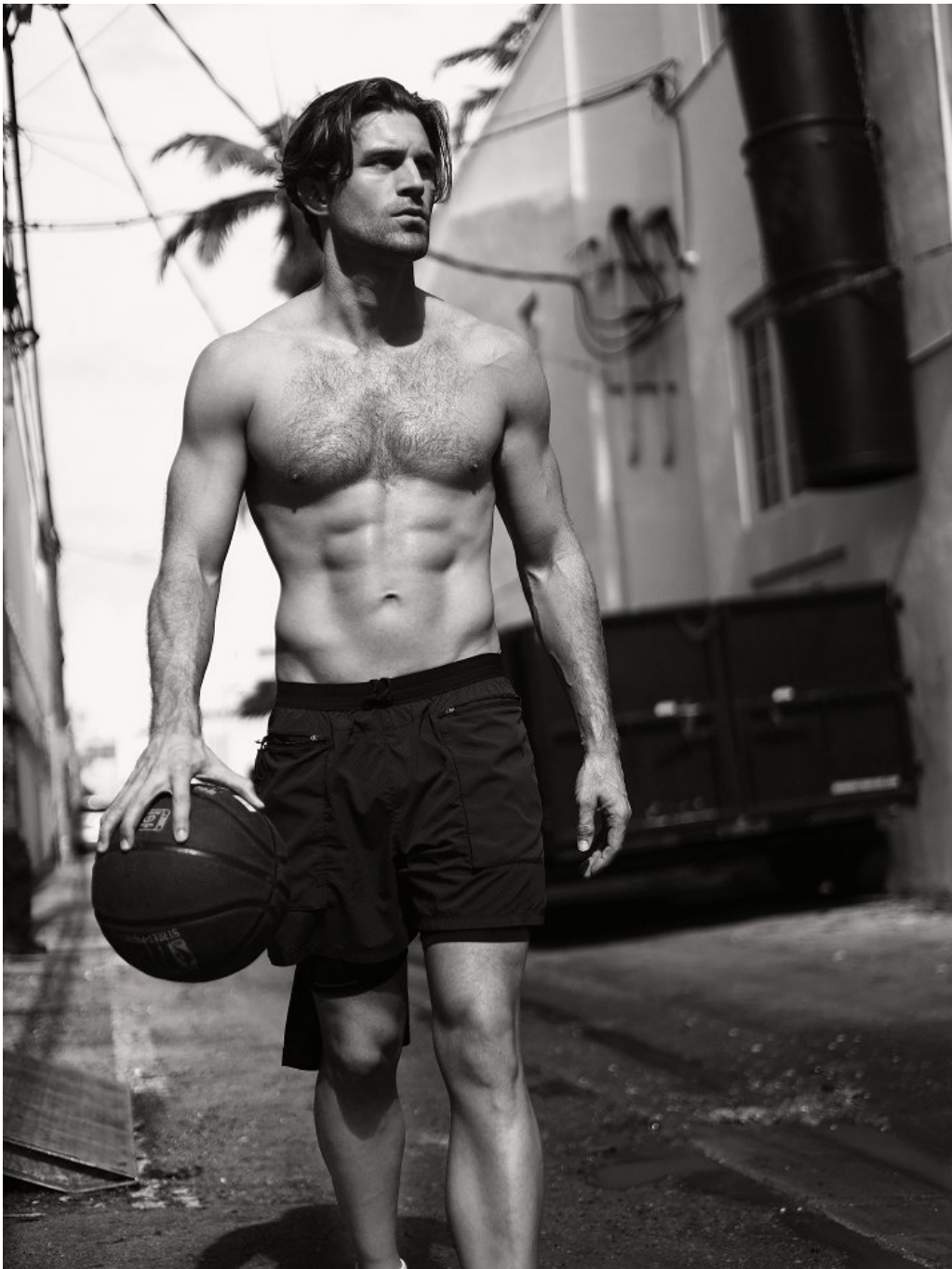


Austin Zenere   Height 6'2" | 188cm   Suit 40" | 102cm R   Shirt 34" | 86cm   Waist 31" | 79cm  
Inseam 32" | 81cm   Shoe 10.5 US | 44.5 EU   Hair Dirty Blonde   Eyes Green | Blue



Austin Zenere   Height 6'2" | 188cm   Suit 40" | 102cm R   Shirt 34" | 86cm   Waist 31" | 79cm  
Inseam 32" | 81cm   Shoe 10.5 US | 44.5 EU   Hair Dirty Blonde   Eyes Green | Blue



Austin Zenere    Height 6'2" | 188cm    Suit 40" | 102cm R    Shirt 34" | 86cm    Waist 31" | 79cm  
Inseam 32" | 81cm    Shoe 10.5 US | 44.5 EU    Hair Dirty Blonde    Eyes Green | Blue



Austin Zenere    Height 6'2" | 188cm    Suit 40" | 102cm R    Shirt 34" | 86cm    Waist 31" | 79cm  
Inseam 32" | 81cm    Shoe 10.5 US | 44.5 EU    Hair Dirty Blonde    Eyes Green | Blue



Austin Zenere Height 6'2" | 188cm Suit 40" | 102cm R Shirt 34" | 86cm Waist 31" | 79cm  
Inseam 32" | 81cm Shoe 10.5 US | 44.5 EU Hair Dirty Blonde Eyes Green | Blue



Austin Zenere   Height 6'2" | 188cm   Suit 40" | 102cm R   Shirt 34" | 86cm   Waist 31" | 79cm  
Inseam 32" | 81cm   Shoe 10.5 US | 44.5 EU   Hair Dirty Blonde   Eyes Green | Blue

**CGM**  
CAROLINE GLEASON  
MANAGEMENT



Austin Zenere Height 6'2" | 188cm Suit 40" | 102cm R Shirt 34" | 86cm Waist 31" | 79cm  
Inseam 32" | 81cm Shoe 10.5 US | 44.5 EU Hair Dirty Blonde Eyes Green | Blue



Austin Zenere   Height 6'2" | 188cm   Suit 40" | 102cm R   Shirt 34" | 86cm   Waist 31" | 79cm  
Inseam 32" | 81cm   Shoe 10.5 US | 44.5 EU   Hair Dirty Blonde   Eyes Green | Blue

**CGM**  
CAROLINE GLEASON  
MANAGEMENT





Austin Zenere Height 6'2" | 188cm Suit 40" | 102cm R Shirt 34" | 86cm Waist 31" | 79cm  
Inseam 32" | 81cm Shoe 10.5 US | 44.5 EU Hair Dirty Blonde Eyes Green | Blue



Austin Zenere   Height 6'2" | 188cm   Suit 40" | 102cm R   Shirt 34" | 86cm   Waist 31" | 79cm  
Inseam 32" | 81cm   Shoe 10.5 US | 44.5 EU   Hair Dirty Blonde   Eyes Green | Blue



Austin Zenere    Height 6'2" | 188cm    Suit 40" | 102cm R    Shirt 34" | 86cm    Waist 31" | 79cm  
Inseam 32" | 81cm    Shoe 10.5 US | 44.5 EU    Hair Dirty Blonde    Eyes Green | Blue



Austin Zenere   Height 6'2" | 188cm   Suit 40" | 102cm R   Shirt 34" | 86cm   Waist 31" | 79cm  
Inseam 32" | 81cm   Shoe 10.5 US | 44.5 EU   Hair Dirty Blonde   Eyes Green | Blue

**CGM**  
CAROLINE GLEASON  
MANAGEMENT



Austin Zenere   Height 6'2" | 188cm   Suit 40" | 102cm R   Shirt 34" | 86cm   Waist 31" | 79cm  
Inseam 32" | 81cm   Shoe 10.5 US | 44.5 EU   Hair Dirty Blonde   Eyes Green | Blue



Austin Zenere    Height 6'2" | 188cm    Suit 40" | 102cm R    Shirt 34" | 86cm    Waist 31" | 79cm  
Inseam 32" | 81cm    Shoe 10.5 US | 44.5 EU    Hair Dirty Blonde    Eyes Green | Blue



Austin Zenere   Height 6'2" | 188cm   Suit 40" | 102cm R   Shirt 34" | 86cm   Waist 31" | 79cm  
Inseam 32" | 81cm   Shoe 10.5 US | 44.5 EU   Hair Dirty Blonde   Eyes Green | Blue

**CGM**  
CAROLINE GLEASON  
MANAGEMENT



Austin Zenere   Height 6'2" | 188cm   Suit 40" | 102cm R   Shirt 34" | 86cm   Waist 31" | 79cm  
Inseam 32" | 81cm   Shoe 10.5 US | 44.5 EU   Hair Dirty Blonde   Eyes Green | Blue





**Maritime Peacoat**

A classic double-breasted coat in Australian lambswool. Eight pockets inside and out, plus leather-bound buttonholes and Pendleton Umatilla wool plaid upper-back lining. Back vent. Lined. Wool/nylon. Dry clean. Imported. Black. S-XXL (31" L on size large). 52225 \$425.00

16

pendleton-usa.com / 800.649.1512



Austin Zenere    Height 6'2" | 188cm    Suit 40" | 102cm R    Shirt 34" | 86cm    Waist 31" | 79cm  
 Inseam 32" | 81cm    Shoe 10.5 US | 44.5 EU    Hair Dirty Blonde    Eyes Green | Blue

**CGM**  
 CAROLINE GLEASON  
 MANAGEMENT



# 12 AND 13

### Denver Anorak

Meet the ultimate winter coat in warm goose and duck down. Features detachable North American coyote fur trim on removable hood, knit cuffs and Umatilla wool plaid on upper-back lining. Leather-trimmed hand-warmer pockets and two inside pockets. Draw cord at waist. Lined. Polyester/cotton. Dry clean. Imported. Black or olive. S-XXL (36" L on size large). 52222 \$595.00

### North Shore Anorak

Utility has never felt so luxurious. Duck down/leather insulation, detachable North American coyote fur trim and velboa fleece-lined removable hood and pockets. Princess seams and adjustable side belts. Pendleton signature cotton plaid on upper-back lining. Inside pocket and arm pocket. Lined. Cotton/nylon. Machine wash. Imported. Olive or red. Misses XS-XL (36½" L). 46751 \$495.00

Austin Zenere    Height 6'2" | 188cm    Suit 40" | 102cm R    Shirt 34" | 86cm    Waist 31" | 79cm  
 Inseam 32" | 81cm    Shoe 10.5 US | 44.5 EU    Hair Dirty Blonde    Eyes Green | Blue

**CGM**  
 CAROLINE GLEASON  
 MANAGEMENT