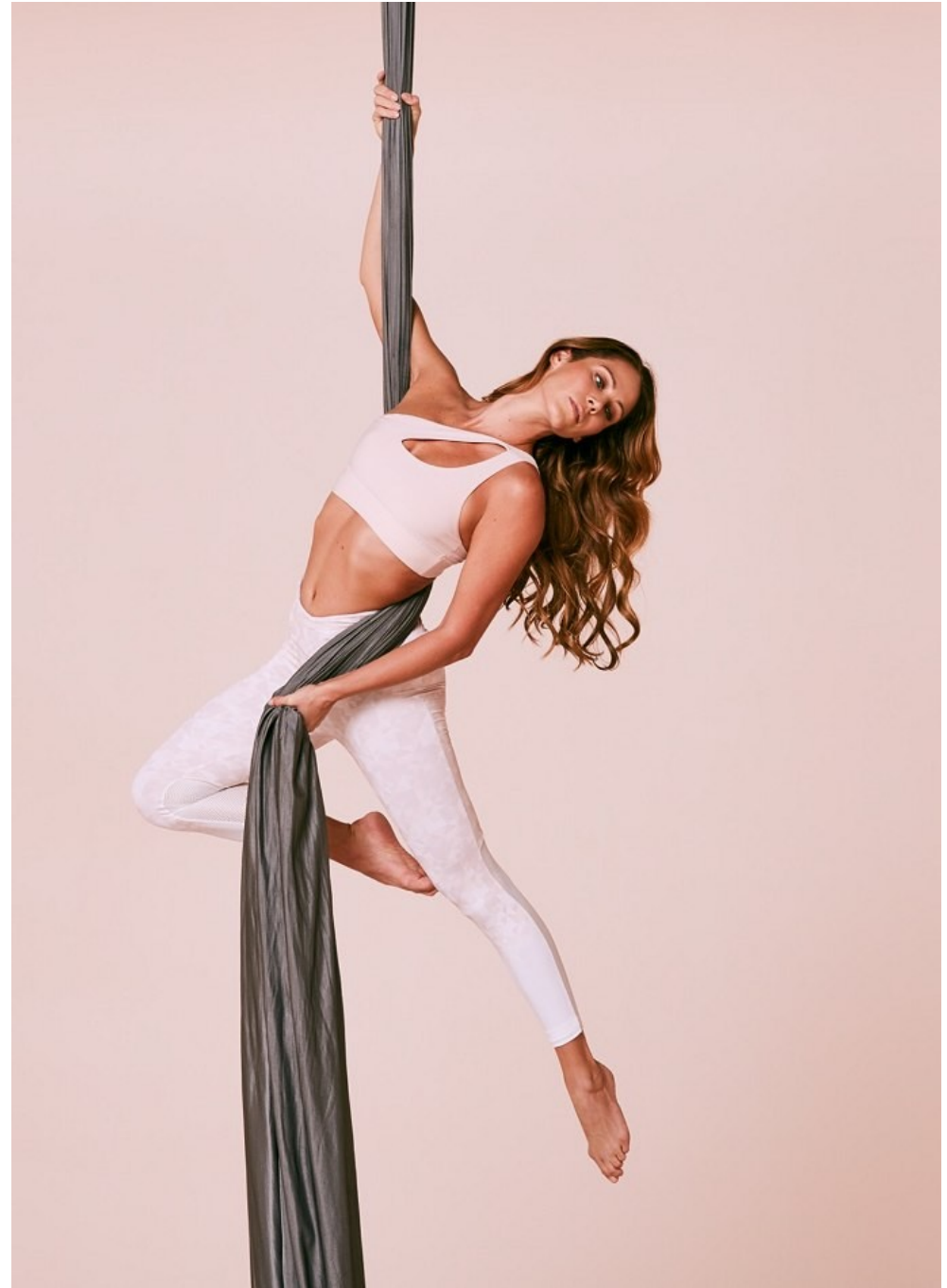


Naomi Grace Height 5'8" | 173cm Bust 34" | 86cm Waist 25" | 64cm Hips 36" | 91cm  
Dress 6-8 US | 36-38 EU Shoe 7.5 US | 38.5 EU Hair Light Brown Eyes Blue



Naomi Grace Height 5'8" | 173cm Bust 34" | 86cm Waist 25" | 64cm Hips 36" | 91cm  
Dress 6-8 US | 36-38 EU Shoe 7.5 US | 38.5 EU Hair Light Brown Eyes Blue





Naomi Grace Height 5'8" | 173cm Bust 34" | 86cm Waist 25" | 64cm Hips 36" | 91cm  
Dress 6-8 US | 36-38 EU Shoe 7.5 US | 38.5 EU Hair Light Brown Eyes Blue



BCH Swimsuit (\$58), Tory Burch Gemini Link Tote (\$195), Tory Burch Nautical Rope Scarf (\$55) from Nordstrom, Schlumberger Twenty Stone Hoop Earrings in Gold with Diamonds (\$15,000) and Schlumberger Sixteen Stone Ring with Diamonds (\$9,200) from Tiffany & Co.

Naomi Grace Height 5'8" | 173cm Bust 34" | 86cm Waist 25" | 64cm Hips 36" | 91cm  
Dress 6-8 US | 36-38 EU Shoe 7.5 US | 38.5 EU Hair Light Brown Eyes Blue

**CGM**  
CAROLINE GLEASON  
MANAGEMENT





So Solid Lola Swimsuit (\$159) from Eberjey. Jazz Pagoda Earrings in Platinum with Diamonds (\$15,500) and Circle Double Drop Necklace with Diamonds in Platinum (\$29,000) from Tiffany & Co.

*Jewelry throughout courtesy of Tiffany & Co. at Bal Harbour Shops, 9700 Collins Avenue, Bal Harbour; 305-864-1801; tiffany.com.*

*Swimsuits courtesy of Nordstrom at Merrick Park, 4310 Ponce de Leon Boulevard, Coral Gables, 786-999-1313, nordstrom.com; J. Crew at Lincoln Road Mall, 726-728 Lincoln Road, Miami Beach, 305-673-9806, jcrew.com; and Eberjey, 1905 Purdy Avenue, Miami Beach, 305-763-8839, eberjey.com.*

*Belzona 327 Walk Around courtesy of Belzona Marine, 2000 Northwest 88th Court, Dade; 305-512-3200; belzomarine.com.*

miamindulge.com | JUNE / JULY 2017 | INDULGE 105

Naomi Grace Height 5'8" | 173cm Bust 34" | 86cm Waist 25" | 64cm Hips 36" | 91cm  
Dress 6-8 US | 36-38 EU Shoe 7.5 US | 38.5 EU Hair Light Brown Eyes Blue

**CGM**  
CAROLINE GLEASON  
MANAGEMENT



Naomi Grace Height 5'8" | 173cm Bust 34" | 86cm Waist 25" | 64cm Hips 36" | 91cm  
Dress 6-8 US | 36-38 EU Shoe 7.5 US | 38.5 EU Hair Light Brown Eyes Blue

**CGM**  
CAROLINE GLEASON  
MANAGEMENT



Naomi Grace Height 5'8" | 173cm Bust 34" | 86cm Waist 25" | 64cm Hips 36" | 91cm  
Dress 6-8 US | 36-38 EU Shoe 7.5 US | 38.5 EU Hair Light Brown Eyes Blue





Naomi Grace Height 5'8" | 173cm Bust 34" | 86cm Waist 25" | 64cm Hips 36" | 91cm  
Dress 6-8 US | 36-38 EU Shoe 7.5 US | 38.5 EU Hair Light Brown Eyes Blue

**CGM**  
CAROLINE GLEASON  
MANAGEMENT





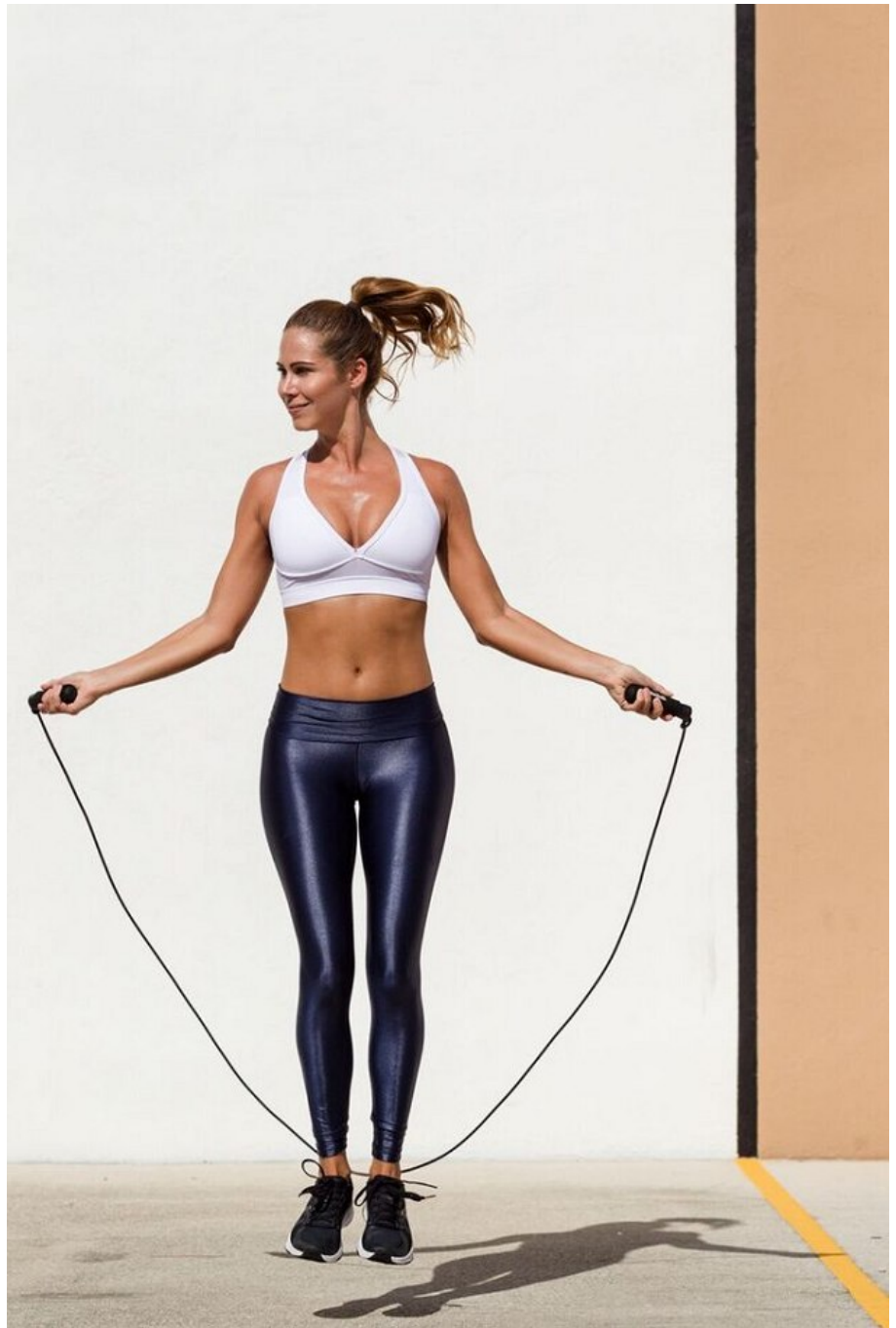
Naomi Grace Height 5'8" | 173cm Bust 34" | 86cm Waist 25" | 64cm Hips 36" | 91cm  
Dress 6-8 US | 36-38 EU Shoe 7.5 US | 38.5 EU Hair Light Brown Eyes Blue





Naomi Grace Height 5'8" | 173cm Bust 34" | 86cm Waist 25" | 64cm Hips 36" | 91cm  
Dress 6-8 US | 36-38 EU Shoe 7.5 US | 38.5 EU Hair Light Brown Eyes Blue





Naomi Grace Height 5'8" | 173cm Bust 34" | 86cm Waist 25" | 64cm Hips 36" | 91cm  
Dress 6-8 US | 36-38 EU Shoe 7.5 US | 38.5 EU Hair Light Brown Eyes Blue



Naomi Grace Height 5'8" | 173cm Bust 34" | 86cm Waist 25" | 64cm Hips 36" | 91cm  
 Dress 6-8 US | 36-38 EU Shoe 7.5 US | 38.5 EU Hair Light Brown Eyes Blue





Naomi Grace   Height 5'8" | 173cm   Bust 34" | 86cm   Waist 25" | 64cm   Hips 36" | 91cm  
Dress 6-8 US | 36-38 EU   Shoe 7.5 US | 38.5 EU   Hair Light Brown   Eyes Blue

**CGM**  
CAROLINE GLEASON  
MANAGEMENT





Naomi Grace Height 5'8" | 173cm Bust 34" | 86cm Waist 25" | 64cm Hips 36" | 91cm  
Dress 6-8 US | 36-38 EU Shoe 7.5 US | 38.5 EU Hair Light Brown Eyes Blue





Naomi Grace Height 5'8" | 173cm Bust 34" | 86cm Waist 25" | 64cm Hips 36" | 91cm  
Dress 6-8 US | 36-38 EU Shoe 7.5 US | 38.5 EU Hair Light Brown Eyes Blue





Naomi Grace    Height 5'8" | 173cm    Bust 34" | 86cm    Waist 25" | 64cm    Hips 36" | 91cm  
Dress 6-8 US | 36-38 EU    Shoe 7.5 US | 38.5 EU    Hair Light Brown    Eyes Blue

**CGM**  
CAROLINE GLEASON  
MANAGEMENT